

Gilard

explore more...>>



www.gilard.com

ABOUT US

Gilard Philosophy

Gilard's organisational structure & working stems from its philosophy which is perfectly summed up by our founder's words, "**Lesser the number of uncertainties, Greater the chances of Success.**"

In keeping with this belief, Gilard has a wide organisational base under one roof, which includes : Design & Development - Tool Room - Moulding Shop - Press Shop - Automats Shops - Electroplating - Assemblies - Quality Assurance & Marketing for better control on **Quality, Cost & Delivery.**

**"Gilard is a
one stop Shop
for Customers
looking for
Highly Complex &
Customised
Products."**



"I have always laid the utmost importance on the two constant beliefs in my life - Honest Dealings in Business and the highest quality of my products. My principles hold a much higher priority for me than a transitory profit. That's how Gilard has been doing its business for the **past five decades.**"

HS SETHI (MD, Gilard)

Development keeps us moving...

Quality Keeps us Ahead...

MILESTONES



1961 - Started in Kota (Rajasthan) as Gilard Radio Corporation,
a partnership concern, manufacturing Valve Sockets for Radios

1970 - Started manufacturing Electronic Components and
Renamed as Gilard Electronics

1975 - Registered as Gilard Electronics Pvt. Ltd.

1985 - Shifted plant from Kota (Rajasthan) to Mohali (Punjab) Chandigarh

1995 - Certified for ISO 9001

2000 - Certified for QS 9000

2004 - Certified for ISO / TS 16949

2006 - Certified for ISO 14001 and OHSAS 18001

2011 - Formation of Gilard's CSR Team EHSAS

2015 - Launch of Gilard's IT wing - Gilard Application Programmers
is registered as a Company.

[ABOUT US](#)

[MILESTONES](#)

[CUSTOMERS](#)

[APQP](#)

[PRODUCT DESIGN](#)

[TOOL DESIGN](#)

[INJECTION MOULDING](#)

[STAMPING](#)

[PLATING](#)

[PRECISION TURNING](#)

[ASSEMBLY](#)

[SPECIAL PROCESSES](#)

[TESTING & VALIDATION](#)

[CSR](#)

[ERP](#)



Gilard
explore more...>>>

CUSTOMERS



Logos depicted on top are registered Logos of respective Companies for whom we are T1 or T2 suppliers

CUSTOMERS



**MARUTI
SUZUKI**



HYUNDAI



TATA



SWARAJ



[ABOUT US](#)

[MILESTONES](#)

[CUSTOMERS](#)

[APQP](#)

[PRODUCT DESIGN](#)

[TOOL DESIGN](#)

[INJECTION MOULDING](#)

[STAMPING](#)

[PLATING](#)

[PRECISION TURNING](#)

[ASSEMBLY](#)

[SPECIAL PROCESSES](#)

[TESTING & VALIDATION](#)

[CSR](#)

[ERP](#)



SANDEN



DELPHI-TVS



Lucas -TVS Limited



Subros
AUTO AIRCONDITIONING SYSTEMS



TrelleborgVibracoustic



TREC



Godrej

WABCO -TVS (INDIA) Limited



**cooper
corp**

All products displayed in the brochure are not for sale.
Some belong to customers and have been displayed to showcase our capabilities.

Gilard
explore more...>>>

Gilard Electronics Pvt. Ltd., Chandigarh

ISSUED BY: [Signature]

DATE: [Date]

FMEA (Process)

Item No.	Rev.	Description	SAFETY	ENVIRONMENT	QUALITY	RELIABILITY	OTHER
1	1.0

CONTROL PLAN

Item No.	Rev.	Description	SAFETY	ENVIRONMENT	QUALITY	RELIABILITY	OTHER
1	1.0

Project Development Schedule

Activity	Start Date	End Date	Status
Design
Manufacture

CORRECTIVE ACTION REPORT

Problem Description: [Text]

Root Cause: [Text]

Corrective Action: [Text]

Preventive Action: [Text]

Design Validation Plan

Customer Part No.: 1-407 258 707

Part Name: Microswitch

Customer: MICO

Design No.: 1.1.2

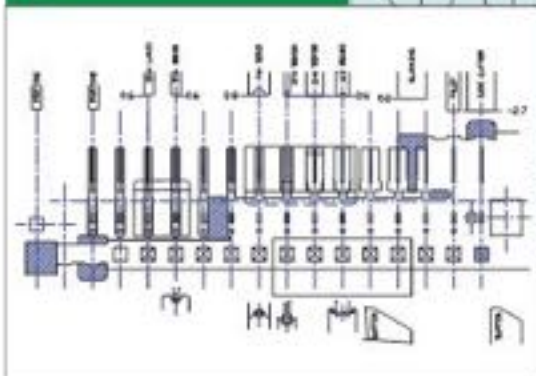
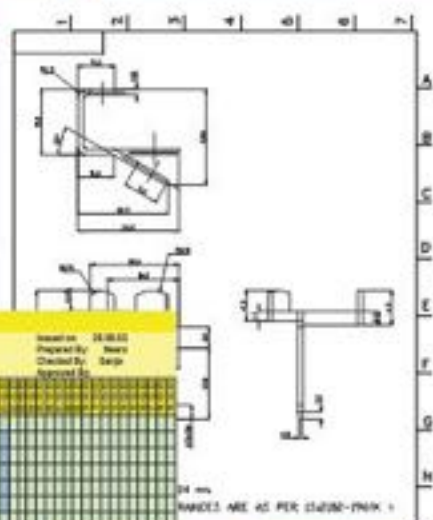
Issued on: 25.08.02

Prepared by: Naveen

Checked by: Naveen

Approved by: Naveen

Sl. No.	Quality Check Item	Specifications	Checked By	Flow	Flow
1	Dimensional Check
2	Material Check
3	Color Check
4	Surface Check
5	Marking Check
6	Functionality
7	Electrical Voltage
8	Current Rating
9
10
11



Gilard Electronics Pvt. Ltd., Chandigarh

GAGE REPEATABILITY & REPRODUCIBILITY (GR&R)

Part No.: 35

Gage Description: Electronic Caliper

Gage No.: 6013

TO BE DONE ONLY ON PARTS & OPERATING AND IN MANUFACTURE ONLY

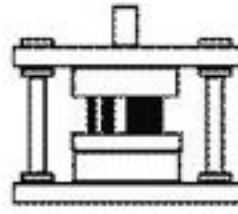
OPERATOR	1	2	3	4	5
Operator A / Trial 1	4.52	4.72	4.52	4.74	4.64
Operator A / Trial 2	4.54	4.52	4.52	4.72	4.67
AVG	4.54	4.62	4.52	4.73	4.66
RANGE	0.20	0.20	0.20	0.22	0.10
Operator B / Trial 1	4.52	4.72	4.52	4.72	4.62
Operator B / Trial 2	4.45	4.52	4.52	4.74	4.67
AVG	4.47	4.62	4.52	4.73	4.65
RANGE	0.27	0.00	0.20	0.22	0.10
Operator C / Trial 1	4.52	4.72	4.52	4.72	4.67
Operator C / Trial 2	4.45	4.52	4.52	4.74	4.67
AVG	4.48	4.71	4.52	4.73	4.67
RANGE	0.27	0.00	0.20	0.22	0.10
PT. Avg. for lot	4.48	4.71	4.52	4.73	4.67
Range part	0.27	0.00	0.20	0.22	0.10

Max. Error: 0.011
 Min. Error: 0.000
 R. Error: 0.000
 Overall Error: 0.011
 LCL: 4.469
 UCL: 4.731
 No. of standard deviations: 1.14

Conclusion: **ACCEPTABLE**

Operator: Naveen
 Date: 15-10-2001

Designing and Developing products as per your specifications...



APQP

We can design, develop and mass produce components for you, all under our single roof.

We are a Full Service Provider to many of our customers wherein we make the moulds and tools and then use them to Supply components and products to them.

Our cost of development is low, our speed of development is fast and our Quality standards are high.

We have a '**New Product Development (NPD)**' department which uses **APQP** techniques to in-build Quality in the Product right from conception.

FMEAs are conducted to identify high **RPNs** and key characteristics. Control Plans are made and reviewed to minimize any potential chance of failure.

NPD is supported by a strong **CAD** office which uses modern softwares to draft and design the components, Assemblies, Moulds and Other tools.

The tools and moulds are manufactured in our Tool Room which is equipped with sophisticated machines like **CNC Wirecut**, **EDMs**, Milling and Grinding machines.

Process Capability studies are conducted to validate the processes.

Customer complaints and other Corrective Actions are handled effectively using 8-D.

[ABOUT US](#)

[MILESTONES](#)

[CUSTOMERS](#)

[APQP](#)

[PRODUCT DESIGN](#)

[TOOL DESIGN](#)

[INJECTION MOULDING](#)

[STAMPING](#)

[PLATING](#)

[PRECISION TURNING](#)

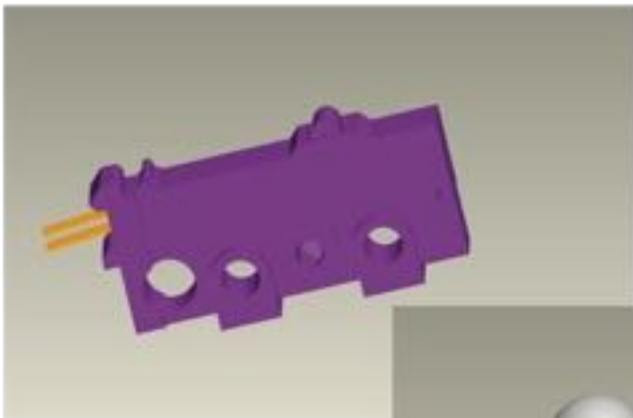
[ASSEMBLY](#)

[SPECIAL PROCESSES](#)

[TESTING & VALIDATION](#)

[CSR](#)

[ERP](#)



**At a lower
cost...**

**At a faster
pace...**

**Still exceeding
your Quality
expectations**

Gilard
explore more...»

PRODUCT DESIGN

Starting with drawings and specifications or with samples and specifications or just samples, we can design the sub-parts, select the correct material, define the dimensions and tolerances and identify the process of manufacturing them. We do designing for both Product and Tool.

The **Design Department** uses modern 2D and 3D modeling softwares like Auto CAD and Pro-Engineer to draft and design components, assemblies, moulds (injection and compression), progressive press tools and other fixtures.

The **Tool Room** is equipped with modern machines like CNC Machining Centre, Wire Cuts, EDMs, Millings and Grinders etc to make tools, moulds, jigs and fixtures for most Stamping as well as Moulding processes. They also perform preventive maintenance for the tools.



Seatbelt
Buckle Switch



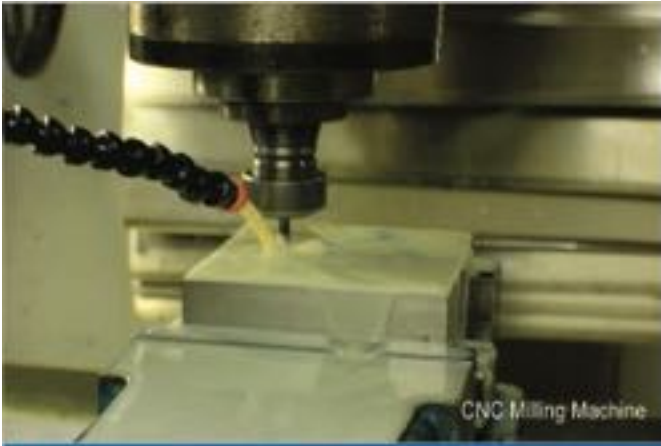
Radiator Resistor



Field & Regulator
Moulding for Alternators



Grinding Machine



TOOL DESIGN



Terminal Defogger

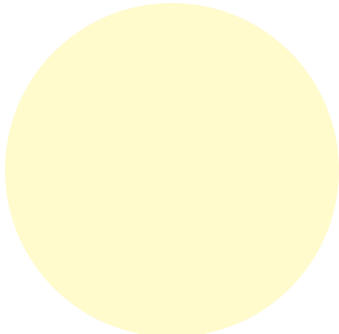


Connector for ECU

- ABOUT US
- MILESTONES
- CUSTOMERS
- APQP
- PRODUCT DESIGN**
- TOOL DESIGN**
- INJECTION MOULDING
- STAMPING
- PLATING
- PRECISION TURNING
- ASSEMBLY
- SPECIAL PROCESSES
- TESTING & VALIDATION
- CSR
- ERP



Cable for Fuel Pump



Resistor Blower for HVAC



INJECTION MOULDING

Gilard has facilities for Injection Moulding of Thermoplastics as well as Thermosetting Material. Besides these, Gilard also does Compression, Rubber and Insert Mouldings. The machine capacities range from 30 to 150 tons. Different Injection Engineering Plastics like Nylons, Polyesters, Acetals, Polycarbonates, ABS, PP, PPO, PPS and elastomers are processed.

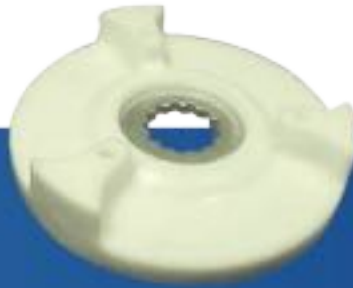
Gilard is equipped with fully automatic computer controlled machines including 9 Thermoplastic Horizontal Machines, 3 Vertical Injection Moulding Machines, 2 Horizontal Thermoset Injection Machines, 6 Compression Moulding Machines & Vertical Thermoset Injection Machine.





Moulding shop

INJECTION MOULDING

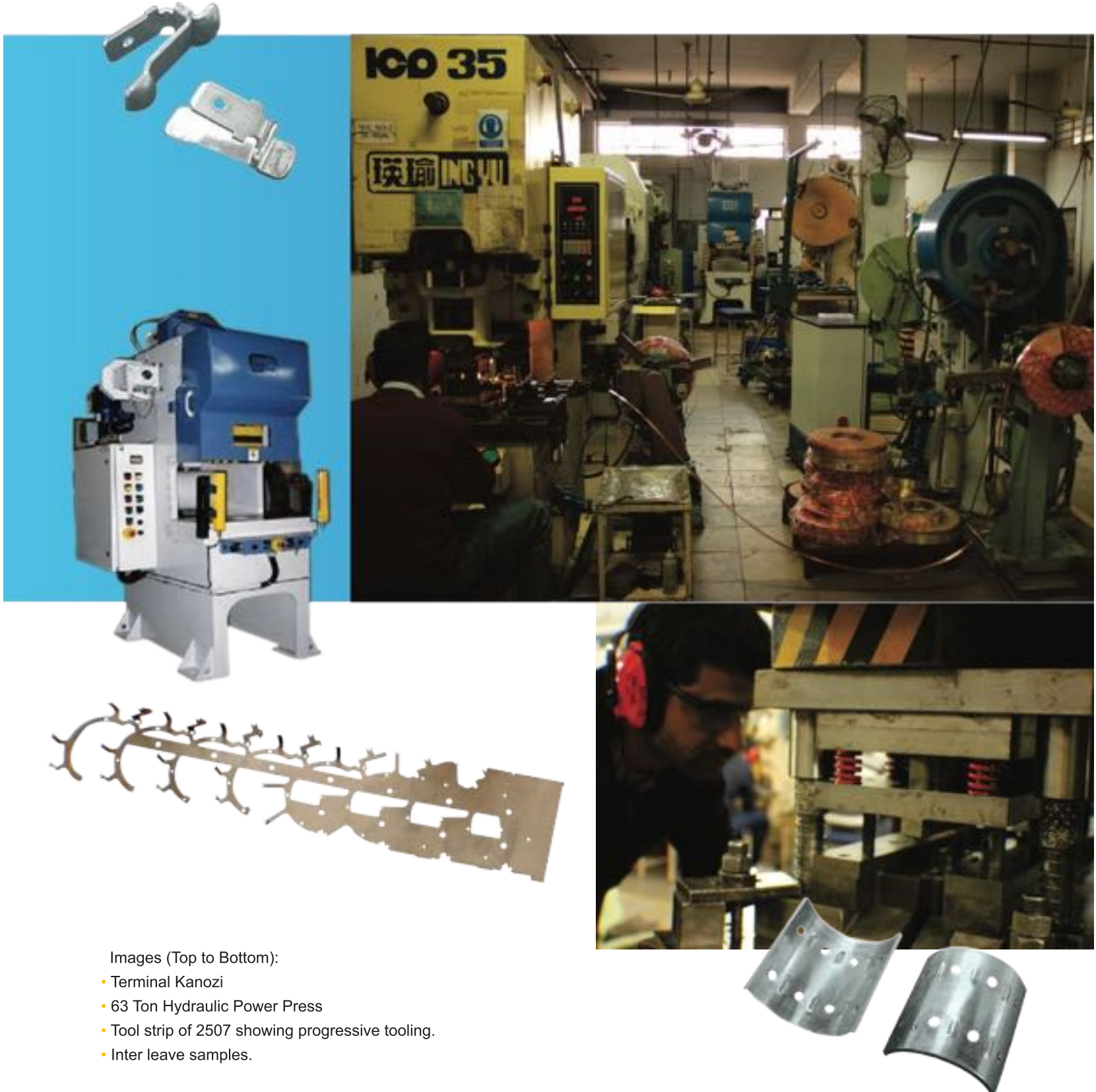


- ABOUT US
- MILESTONES
- CUSTOMERS
- APQP
- PRODUCT DESIGN
- TOOL DESIGN
- INJECTION MOULDING**
- STAMPING
- PLATING
- PRECISION TURNING
- ASSEMBLY
- SPECIAL PROCESSES
- TESTING & VALIDATION
- CSR
- ERP



STAMPING

Gilard uses **high speed power presses (upto 600 spm)** and medium speed presses with **progressive tools** for making stamped parts. The machine capacities range from 10 to 63 tonnes. Most of the presses are fitted with feeders and decoilers. Different materials like CRCA, GI, Copper, Phosphor Bronze, Beryllium Copper, Stainless Steel, etc are processed.



Gilard has an in-house Plating Shop which has lines for Gold, Silver, Tin, Nickel, Copper and Zinc Platings. While most of the lines are semi automatic, the silver line is fully automatic. Gilard is an environment conscious company and takes care that all platings are ROHS compliant. Gilard also has an Effluent Treatment Plant in place to treat the effluent.

PLATING



- ABOUT US
- MILESTONES
- CUSTOMERS
- APQP
- PRODUCT DESIGN
- TOOL DESIGN
- INJECTION MOULDING
- STAMPING**
- PLATING**
- PRECISION TURNING
- ASSEMBLY
- SPECIAL PROCESSES
- TESTING & VALIDATION
- CSR
- ERP



Images (Clockwise):

- Before & After Gold Plating of Tags.
- Chemical testing of Plating Baths.



PRECISION TURNING

Precision turned and machined parts are made in Gilard's Auto Machine Shop. Special springs and coils are also manufactured in this shop. This particular production shop with highly skilled workforce is equipped with Lathes, Traubs, Tapping Machines, Drilling Machines, Grinders and Coiling Machines.



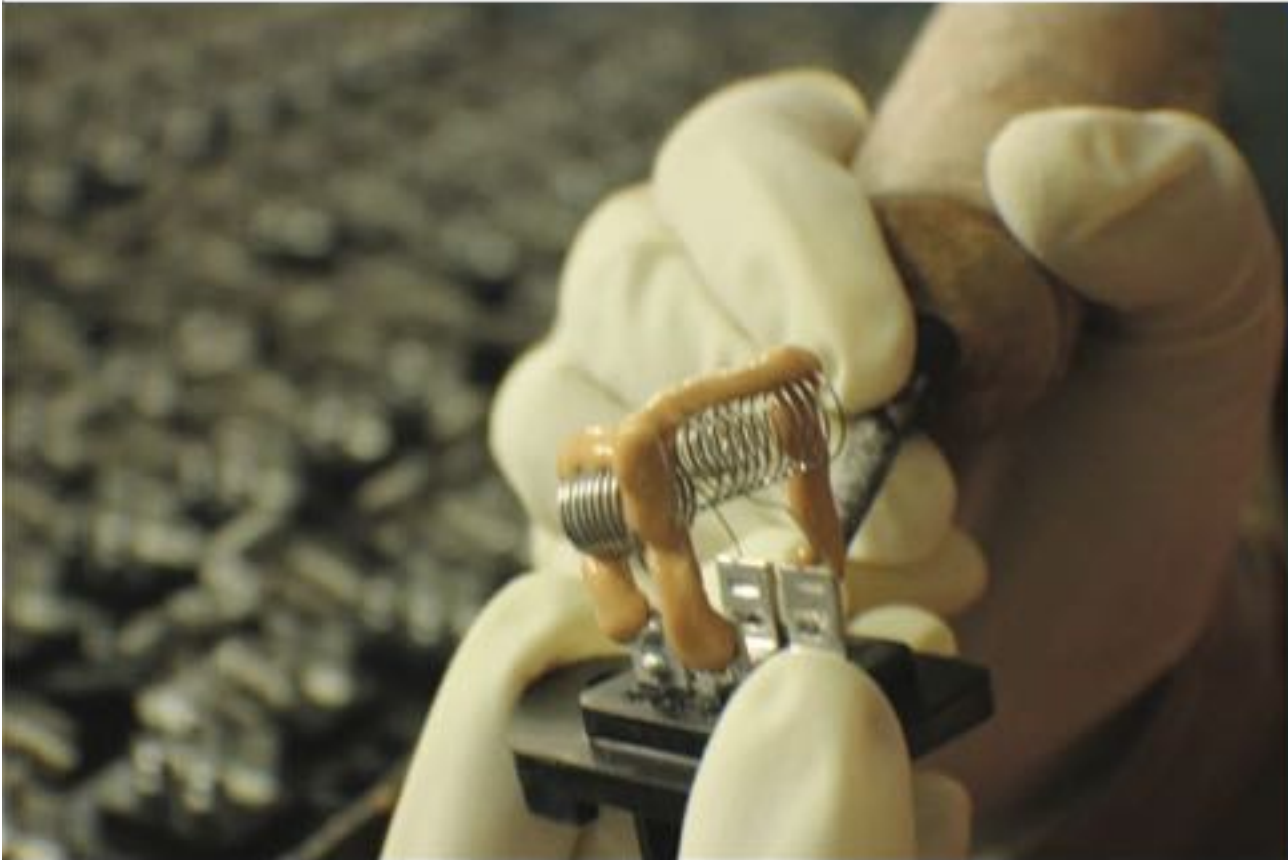
Traub Machine



Milling Machine

Gilard is an equal opportunity provider and that is obvious when one walks into the assembly shop which is run by a sea of women workforce. Gilard has flexible lines for different products and dedicated Assembly lines for Specific Customers. The Lines are scientifically designed to yield optimum productivity and produce defect free products using Poka Yoke. Single piece flow on line testing ensures high quality standards.

ASSEMBLY



- ABOUT US
- MILESTONES
- CUSTOMERS
- APQP
- PRODUCT DESIGN
- TOOL DESIGN
- INJECTION MOULDING
- STAMPING
- PLATING
- PRECISION TURNING**
- ASSEMBLY**
- SPECIAL PROCESSES
- TESTING & VALIDATION
- CSR
- ERP



Assembly Line



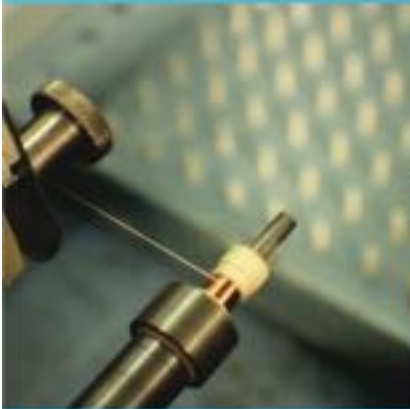
On Line Inspection

SPECIAL PROCESSES

Gilard is equipped with Special Purpose Machines to perform certain special processes required for customised product requirements for the customers. These include processes like Printing, Spot Welding, Dip Soldering, Hand Soldering, Winding, Heat Shrinking, Cementing, Potting, Wire Cutting and Paint Fill.

Winding

Using high speed automatic machine capable of winding wire as fine as 0.06mm ϕ



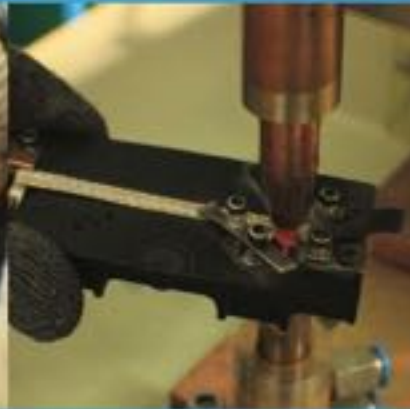
Potting

Using 2 part epoxies & PU for sealing & waterproofing the assembly.



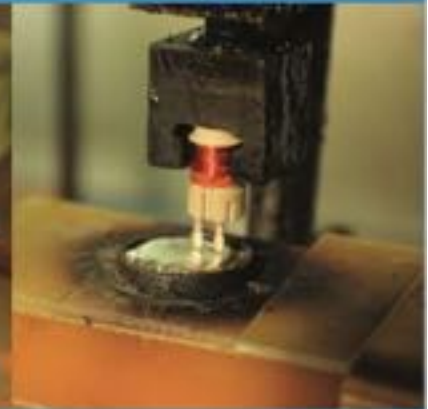
Spot Welding

3 Phase 25 KVA spot welding machines to spot weld two metals together using Tungsten / Copper electrodes.



Soldering

Electronically controlled, temperature displayed soldering Stations in place where ever required.



Pictures (Clockwise):

- Before and after Potting picture of Wiper Motor Assembly.
- Before and after Heat Shrinking picture of Terminal.
- Operator working on Winding machine

Gilard has a fully equipped LAB to perform validation tests on new products and periodic life endurance tests on regular products. It has a climatic chamber from -40 to 200 degrees Celsius and Special Purpose Machines (SPMs) for conducting life testing on switches. LAB is also involved in the regular calibration of instruments like Vernier Calliper, Micrometer, Micro Ohm Meter, Weighing Machines, Voltmeter, Ammeter and CR Testers. Gilard's LAB also has the capability to perform Water spray test and salt spray test.

TESTING & VALIDATION



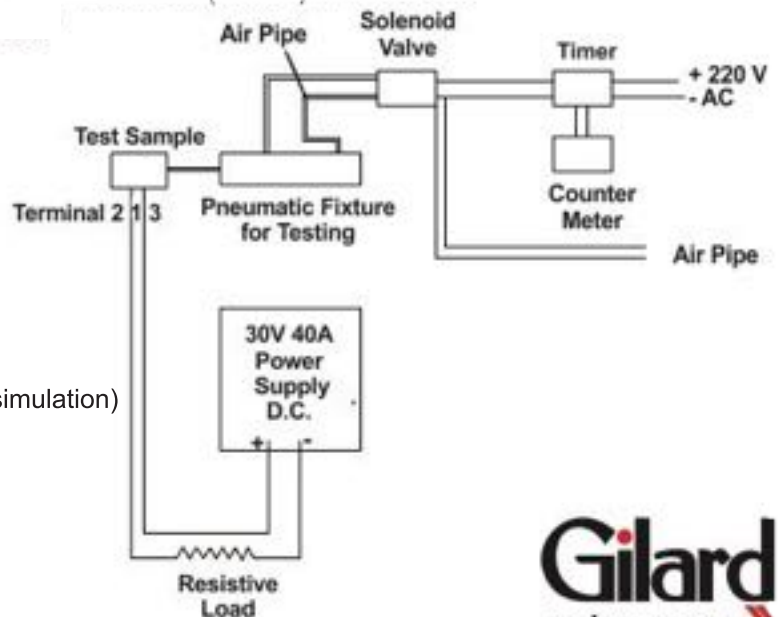
- ABOUT US
- MILESTONES
- CUSTOMERS
- APQP
- PRODUCT DESIGN
- TOOL DESIGN
- INJECTION MOULDING
- STAMPING
- PLATING
- PRECISION TURNING
- ASSEMBLY
- SPECIAL PROCESSES
- TESTING & VALIDATION
- CSR
- ERP



Gilard's LAB performs a range of validations and tests including but not limited to

- Circuit breakdown verification (Electric fan shortcircuit simulation)
- Life test
- Resistance to permanent damp heat
- Resistance to Thermal Shock
- Vibrational Endurance
- Drop Test
- Resistance to chemical attack
- Corrosion treatment resistance

START SWITCH (765-03) TEST SETUP



CSR

From its inception in 2011, Environment, Health, Safety and Society, have been at the core of EHSAS's scope of work. Although not a legal obligation for Gilard, the company's team EHSAS works towards the betterment of the immediate society. And therein lies the difference in the approach because their actions originate from the heart. Providing equal opportunities to women & specially disabled persons, sensitizing Gilardians & their families towards environmental concerns, Walkathons to spread socially relevant messages, holding Blood Donation Camps & Blood Platelet Donors for cancer patients are some of the endeavours taken up by EHSAS. Under "Swachha Bharat Abhiyan" Gilardians clean the neighbourhood & educate young school kids on personal hygiene & saving of water, paper & power.



"In the end, it is never just about running a business, sales growth or profitability. The true measure of a company is not just what it does for shareholders and clients, but how well it addresses the needs of its employees and the immediate society."

H.S. Sethi (Founder, Gilard).

CSR of Gilard

Creating Shared values : **Profit with social benefits.** This shared value can save the world from economic, social and environmental collapse!

The concept of 3Ps-People, Planet and Profits is being widely discussed in business scenarios. Gilard's management feels strongly that even small scale industries are capable of contributing to the immediate society. A company may spend lesser money but put in more effort, concern and strategy for contributing towards : PEOPLE & PLANET. The business should generate profits, people should gain from it and the planet should not be harmed by its actions.

Besides taking responsibility for our actions and making our business fully accountable we make efforts to pay back to the society.

We have the power of choice but a sustainable life means taking social responsibility.



We assure you of better CONTROLS

- Better Production Planning
to ensure better Deliveries
- Better Material Planning
to ensure No Production Hold-ups
- Better Process Control
to ensure better and consistent Quality
- Better cost Control
to ensure a better price / value.

ERP



- ABOUT US
- MILESTONES
- CUSTOMERS
- APQP
- PRODUCT DESIGN
- TOOL DESIGN
- INJECTION MOULDING
- STAMPING
- PLATING
- PRECISION TURNING
- ASSEMBLY
- SPECIAL PROCESSES
- TESTING & VALIDATION
- CSR
- ERP

We provide you real time status on INVENTORIES, SCHEDULES, DELIVERIES, LOGISTICS, ACCOUNTINGS etc. We take better control on Design and Development Activities. We seamlessly manage all ENGINEERING CHANGES. We CONTINUOUSLY IMPROVE in different areas based on our Internal Metrics as well as Customer feedback. We have over 100 Performance Indicators to guide us. We handle Customer Complaints and the following Corrective and Preventive Action better. We train and develop our Associates better.

We do the same ... Just a lot Better ...

We do all this with GAP ERP + ... An ERP and BMS software that we have installed and commissioned in our Company. This software has been developed and customized over a period of 29 years and controls almost everything for us.

STAY IN CONTROL



www.gaperplus.com

Ph: +91-172-5020510 Mob: +91-9888111773

★ GAPERP+ is the flagship product of Gilard Application Programmers LLP.

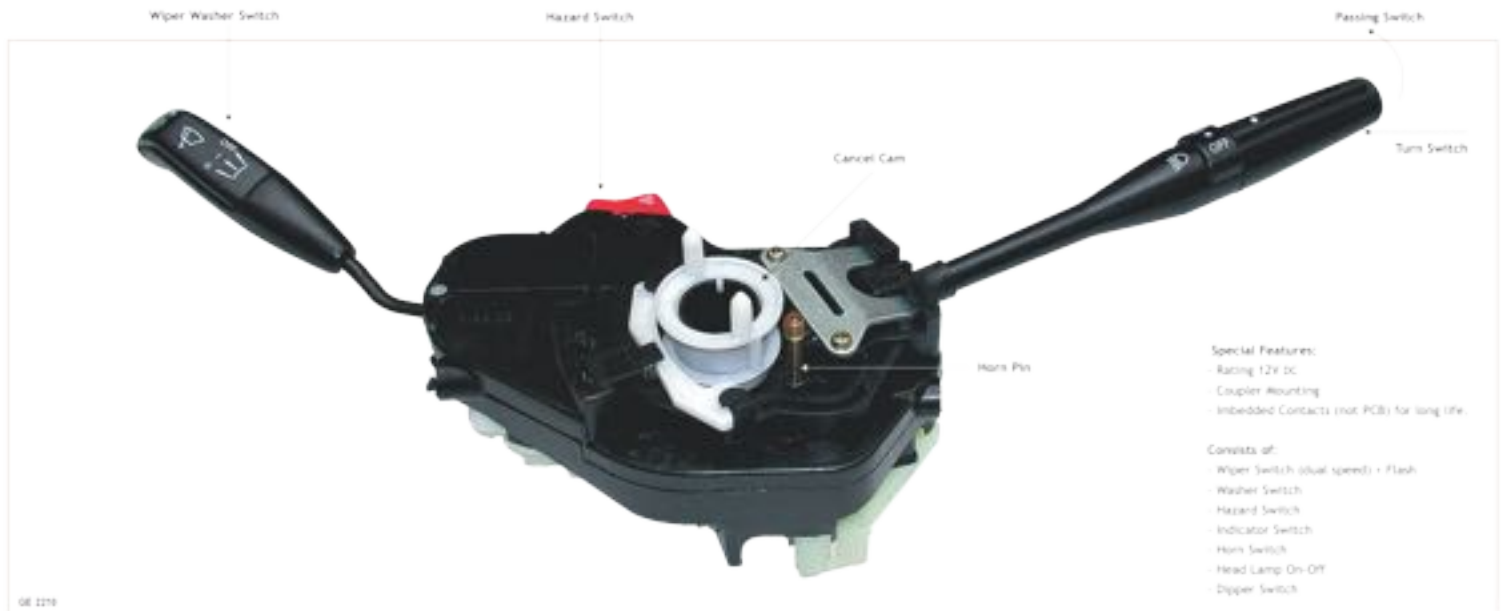
Gilard
explore more...>>>

Gilard

explore more... 

COMBINATION SWITCH

COMBINATION SWITCH



PRODUCT RANGE

[ABOUT US](#)
[MILESTONES](#)
[CUSTOMERS](#)
[APQP](#)
[PRODUCT DESIGN](#)
[TOOL DESIGN & DEV.](#)
[INJECTION MOULDING](#)
[STAMPING](#)
[PLATING](#)
[PRECISION TURNING](#)
[ASSEMBLY](#)
[SPECIAL PROCESSES](#)
[TESTING & VALIDATION](#)
[CSR](#)
[ERP](#)
[PRODUCTS](#)



RESISTORS



GE 2341

4 Speed Resistor
(Scorpio)



GE 2303

4 Speed Plate Type Resistor Blower
(Swift)



GE 2321

4 Speed Resistor
(Indica & Scorpio)



GE 2162-031

4 Speed Resistor Blower
(Tata Indica, Maruti Versa, Sumo Face Lift
Reva Electric Car)



GE 2162-14X1

4 Speed Resistor Blower
(Tata Indica Vista)



GE 2162-14U

4 Speed Resistor Blower
(Mahindra XYLO)



GE 2302

3 Speed Resistor Blower with
Thermal Fuse (Tata Nano)



GE 2361

4 Speed Resistor Blower
(GM)



GE 2162-24S

4 Speed Resistor Blower with Cage
& Solder Type Fuse (Maruti Estilo)



GE 2331-04

3 Speed Resistor Blower
(For Commercial Vehicles)



GE 2214

Radiator Resistor
(Mahindra S101 & Tata)



GE 2351

Radiator Resistor
(Mahindra TUV)

**COMPONENTS - STARTERS
& ALTERNATORS**



GE 2506

Field Moulding
(ACE Start Stop- Tata)



GE 2507-01

Field Moulding
(Tata Cummins ltd.)



GE 2517-02

Field Moulding
(Maruti Wagon-R)



GE 2518-03

Field Moulding
(Tata Narrow Cab VECV Truck)



GE 2519-02

Regulator Moulding
(VECV Truck)



GE 2519 RMS

Regulator Moulding
(Tata Narrow Cab & Sumo Gold)



GE 2514

Regulator Moulding
(Maruti)



GE 2510

Brush Box Moulding



GE 2407

Plug Moulding
(IRIS Magic BS4- M & M)

SWITCHES FOR LCV



GE 781-01

Neutral safety Switch (NC Type)

Rating : 24V DC, 0.5 Amp
Operation : Push to Off



GE 751

Switch Stop Lamp

Rating : 12V DC, 8 Amp
Operation : Push to Off



GE 752

Switch Accelerator

Rating : 10V DC, 3 Amp
Operation : Push to On



GE 768

Switch Exhaust Brake

Rating : 12V DC, 3 Amp
Operation : Rocker Type



GE 769

Switch Room Warmer

Rating : 12V DC, 0.5 Amp
Operation : Push to On
Push to Off



GE 768-FL

Switch Fog Lamp

Rating : 12V DC, 10 Amp
Operation : Rocker Type



GE 769-RL

Switch Roof Lamp

Rating : 12V DC, 5 Amp
Operation : Push to On
Push to Off



GE 769-03

DIFF Switch

Rating : 12V DC, 0.5 Amp
Operation : Push to On
Push to Off



GE 750-02

Door Switch

Rating : 12V DC, 2 Amp
Operation : Side to On



GE 788

Push-Pull Switch

Rating : 12V DC, 3 Amp
Operation : Pull to On
Push to Off



GE 780-01

CNG Switch

Rating : 12V DC
Operation : Push to On



GE 750

Switch Lamp Door

Rating : 14V DC, 2 Amp
Operation : Push to Off

SWITCHES FOR TRACTORS



GE 765-03

Start Switch

Rating : 12V DC, 30 Amp
Operation : Rocker Type
Termination: Lug Type



GE 765-05

Starter Switch with Key

Rating : 12V DC, 30 Amp



GE 786

Start Switch

Rating : 12V DC, 15 Amp



GE 764

Light Switch

Rating : 12V DC, 10 Amp
Operation : Rotary
Termination : Screw Type



GE 776

Clutch Safety Switch

Rating : 12V DC, 10 Amp
Operation : Push to Off



GE 776-02

Stop Light Switch

Rating : 12V DC, 10 Amp
Operation : Toggle (Push to Off)



GE 762-06

Brake Light Switch 60 HP Model

Rating : 12V DC, 10 Amp
Operation : Push to Off



GE 762

Brake Light Switch

Rating : 12V DC, 10 Amp
Termination : Clip on



GE 761-04

Hazard Switch (Toggle Type)

Rating : 12V DC, 11 Amp
Operation : Toggle
Salient Features : One input/Two outputs



GE 763

Horn Push Button

Termination : Clip on & Screw Type
Salient Features : Protective rubber cap provided



GE 773A

Neutral Switch

Rating : 16V DC, 5 Amp
Termination: Wire Insertion Type



GE 726-7413P

Indicator Switch

Rating : 12V DC, 10 Amp
Operation : Toggle
Termination: Wire Insertion Type

BLOWER SWITCH SERIES



GE 2219-SU

3 Speed Blower Switch(12/24V)



GE 2219-SV

3 Speed Blower Switch(12/24V)
with Plate



GE 2218

Control Panel Assembly



GE 787

Slider Switch 4 Position 3 Speed



GE 778

4 Speed Blower Switch(12/24V)



GE 778-02

3 Speed Blower Switch(12/24V)



GE 771

Rotary Switch 4 Position 3 Speed



GE 2218

Rear Control Panel with Rotary &
A/C Switch



GE 2219-SV02

3 Speed Blower Switch(12/24V)
with Big Plate

WIRE ASSEMBLIES



GE 913

Fuel Injector connector with Gold Plated Terminals



GE 919

Connector Cable for Diesel Fuel Pumps



GE 2405

Sensor Extension Cable



GE 2185-05

Wiper Cover Assembly



GE 2402

3 Core Cable



GE 1385-08

3 Core Coil with Terminal Assembly



GE 2406

Innova Bakelite Terminal



GE 1170

Pick Up Assembly



GE 1171

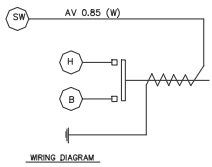
Overmolded Winding Assembly

COLD START SET UP FOR DIESEL VEHICLES



GE 1561

Heater Relay



Rating: 12V DC, Permissible current 200 Amp
Special Features:

- Mounting pitch- 46mm.
- Coupler arrangement with flexible wire.
- Bright zinc plating to prevent corrosion.



GE 2205

Air Heater

Rating: 11V, 130 Amp
Special Features:

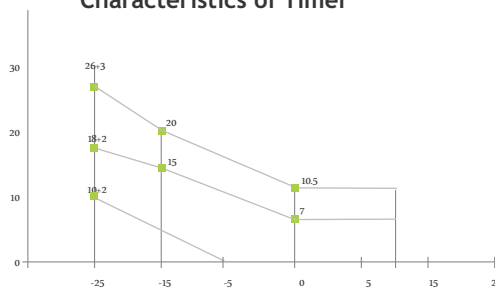
- Mounting pitch- 85 x 85.11mm holes.
- Body made of pressure die casted Aluminium.
- Connection through copper stranded PVC wire.



GE 1563

Unit Control

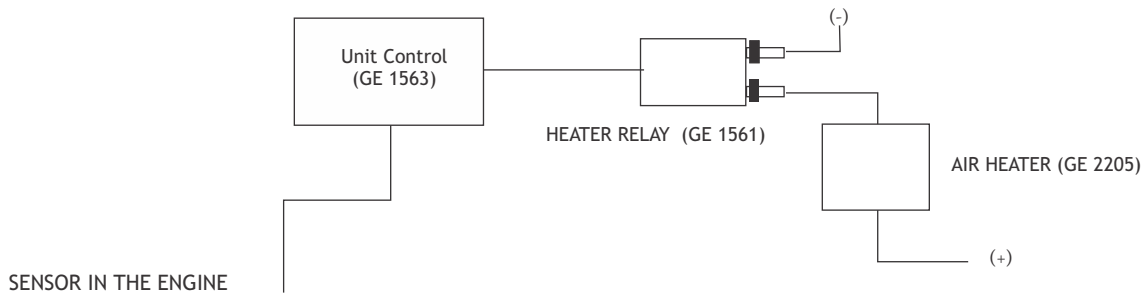
Rating: 12V DC Normal Temperature Characteristics of Timer



GE 1563

Populated PCB of Unit Control

COLD START SET UP FOR DIESEL VEHICLES



Unit Control (GE 1563) senses the temperature using a sensor and the internal circuit decides the time duration of the heating to be provided to the engine. Triple timers energise the Heater Relay (GE 1561) which in turn power the Air Heater (GE 2205) for the required duration to start the engine

FLASHER & SOLENOID



GE 2207

Solenoid Valve

Rating : 12V DC
 Air leakage : 0.5 l max/min at On & Off



GE 1562

Flasher

Rating : 12V DC
 Flash Rate : 70 c/m

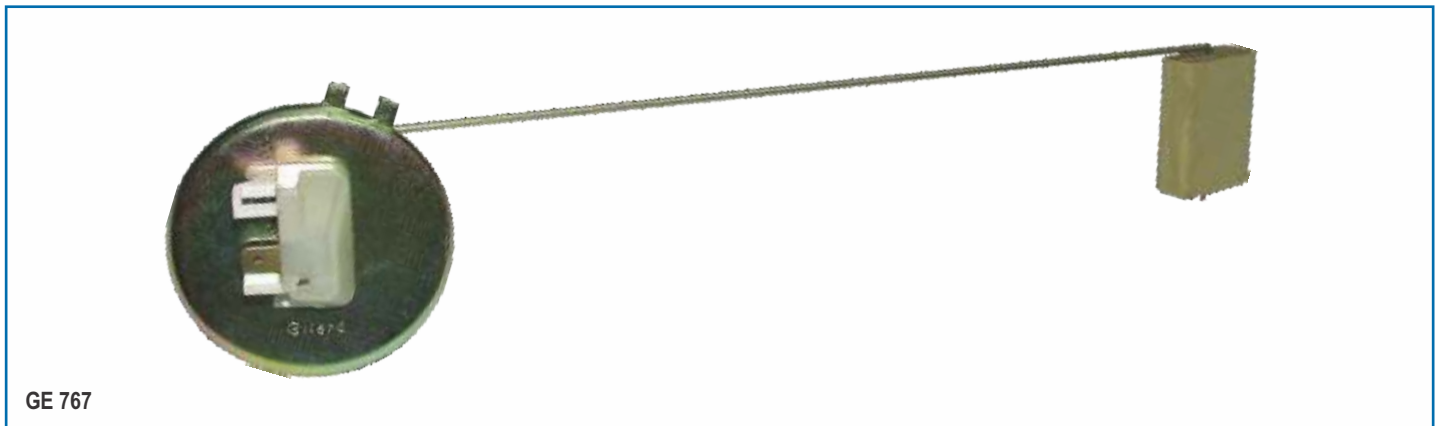
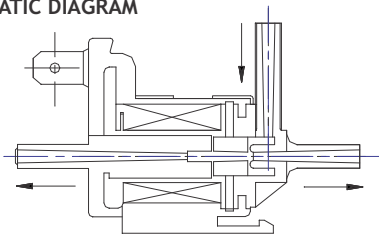


GE 1565

Unit Flasher

Rating : 12V DC
 Flash Rate : 90 c/m
 Starting Time : 1.5 max

SCHEMATIC DIAGRAM



GE 767

Float Assembly

Rating : 12V DC
 Type : Resistance
 Material of Float : Polyurethane foam

Resistance Standard

Float Position	Resistance	Fuel in liters in falling level
Empty	110 + 7 ohms	5.5 - 8.5
Half	32.5 + 4 ohms	20.5 - 23.5
Full	3 + 2 ohms	39.5 - 42.5

PLUGS & CONNECTORS



GE Series 995-07

3 Pin Socket
Rating : 240V AC, 6 Amp



GE Series 997-18

3 Pin Plug
Rating : 240V AC, 15 Amp



GE Series 997-08

3 Pin Socket for Export
Rating : 240V AC, 15 Amp



GE Series 997-01

Connector
Rating : 250V AC, 10 Amp
Insulation Resistance: 10M ohm at 500V DC



GE Series 997-07

Outlet DUP 5.20 Black
Rating : 125V AC, 20 Amp
Insulation Resistance: >100M ohm at 500V DC



GE Series 997-02-03

Quick Connect Type
Rating : 250V AC, 10 Amp
Insulation Resistance: 10M ohm at 500V DC



GE Series 984

Brass Connector
2-8 way round Connectors
Rating : 5 Amp



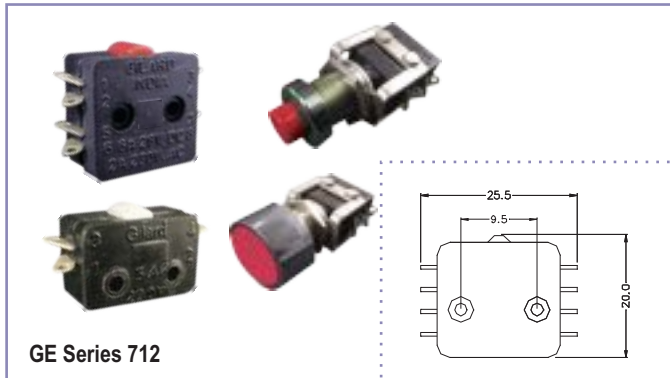
GE Series 9000 (John's Plug)

STANDARD COMBINATIONS: PLUG PROVIDED WITH CLIPS FOR CHASSIS MOUNTING & SOCKET WITH COVER BUT WITHOUT ACCESSORIES.
REVERSE FITTING: PLUG WITH COVER & SOCKET WITH CLIPS FOR CHASSIS MOUNTING.

SPECIFICATIONS

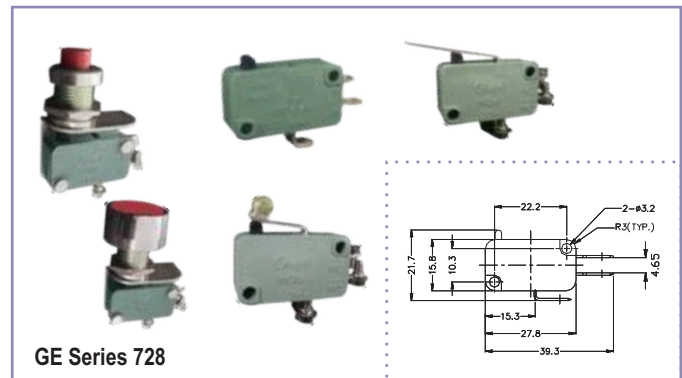
INSULATION RESISTANCE: 1000M OHMS(MIN)
RATING: 250V AC, 5 Amp
VOLTAGE WITHSTANDING:
1KV (FOR SERIES 9000)
2.5KV(FOR SERIES EXCEPT 9102)
1.5KV (FOR 9102)

MCRO SWITCHES



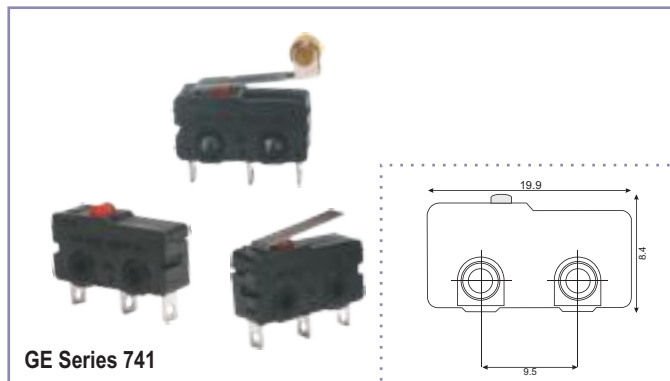
GE Series 712

Contact Rating : 230V AC, 2 Amp
 Contact Resistance : 30m ohm (max) for Gold Plating
 20m ohm (max) for Silver Plating



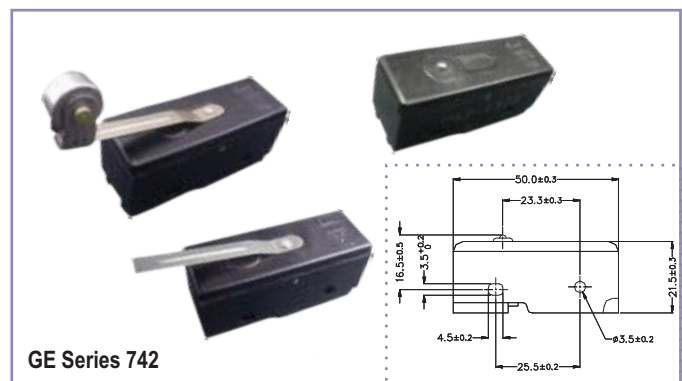
GE Series 728

Contact Rating : 230V AC, 10 Amp
 Contact Resistance : 10m ohm (max)



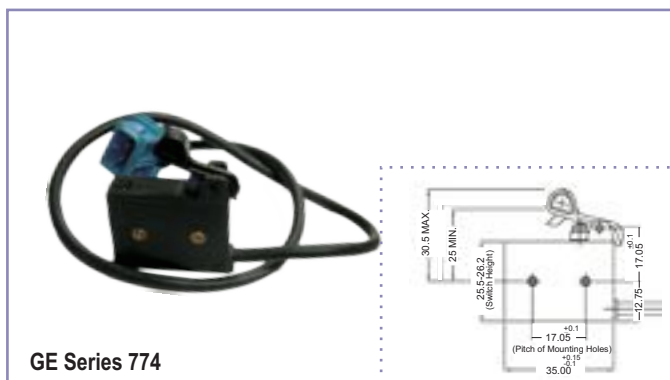
GE Series 741

Contact Rating : 230V AC, 3 Amp.
 Contact Resistance : 10m ohm (max)



GE Series 742

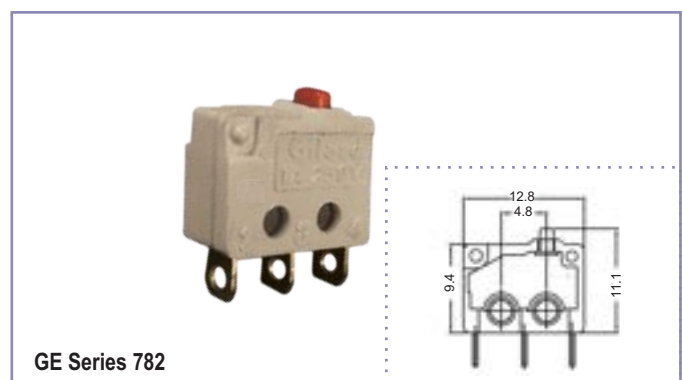
Contact Rating : 230V AC, 15 Amp
 Contact Resistance : 10m ohm (max)



GE Series 774

Electrical Specifications:

Operating Force : ≤ 300 N
 Endurance /Life Test : 5,000,000 Cycles
 Operating Voltage : 6-15 Volts
 Dielectric Strength : ≥ 500 Volts



GE Series 782

Electrical Specifications:

Operating Force : 1.96N or less
 Endurance /Life Test : 50,000 Cycles
 Operating Voltage : 12V DC, 1 Amp
 Insulation Resistance : 1M ohm at 500V DC

TOGGLE SWITCHES



GE Series 713

M12 Bushing

Rating : 230V AC, 4.5 Amp
 Contact Resistance : 20m ohm (max)
 Insulation Resistance : 100M ohm (min)



GE Series 726-1

M12 Bushing

Rating : 230V AC, 6 Amp
 Contact Resistance : 10m ohm (max)
 Insulation Resistance : 1000M ohm (min)



GE Series 726-2

M12 Bushing

Rating : 230V AC, 10 Amp
 Contact Resistance : 10m ohm (max)
 Insulation Resistance : 1000M ohm (min)



GE Series 726-3

M12 Bushing

Rating : 230V AC, 15 Amp
 Contact Resistance : 10m ohm (max)
 Insulation Resistance : 1000M ohm (min)



GE Series 726-4

M12 Bushing

Rating : 230V AC, 20 Amp
 Contact Resistance : 10m ohm (max)
 Insulation Resistance : 1000M ohm (min)



GE Series 727

M6 Bushing

Rating : 230V AC, 3 Amp
 Contact Resistance : 10m ohm (max)
 Insulation Resistance : 1000M ohm (min)

**MISC. SHEET METALS/
MOULDINGS**



GE 2216

Inter Leaf



GE 1397

Defogger Terminal
Nexon (Tata)



GE 1385

Defogger Terminal



GE 2520

Terminal
Condensor (Subros)



GE 2521

Stay Plate
Radiator Motor (Focustek)



GE 2515

Terminal Block



GE 2504

Nut Plate



GE 2503

Plate



GE 2505

Holder Door Glass

DEALER NETWORK



contact us: _____

EPBX: +91-172-5090771, 5090772

Direct Marketing Phone: +91-172-5090773, 5090774

Direct Sales Phone: +91-172-5020511, 5020513, 5020514 & 5020517

www.gilard.com _____

E-mail: sales@gilard.com, marketing@gilard.com

Gilard Electronics Pvt.Ltd.

C-132, Phase-VIII, Industrial Area, Mohali, Chandigarh-160 071
Corporate identity No. (CIN) U31909PB1983PTC012861

ISO 9001: 2000

TS 16949: 2009

ISO 14001: 2004

OHSAS 18001:2007

Gilard is ISO 9001-2000, TS 16949: 2009, ISO 14001:2004, OHSAS 18001:1999 certified.